



Province of the
EASTERN CAPE
EDUCATION

SENIOR PHASE

GRADE 9

NOVEMBER 2013

**NATURAL SCIENCES
MEMORANDUM**

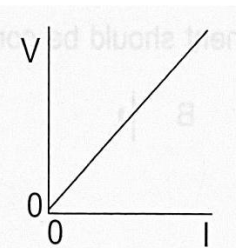
MARKS: 100

This memorandum consists of 7 pages.

INSTRUCTIONS AND INFORMATION

1. Note carefully the distribution of marks.
2. Any other possible answers must be considered especially in open-ended questions.

QUESTION 1: MULTIPLE-CHOICE QUESTIONS

- 1.1 C ✓  (1)
- 1.2 D ✓ Milk of magnesia [$Mg(OH)_2$] (1)
- 1.3 D ✓ carbon dioxide, water and energy (1)
- 1.4 D ✓ Calcium (Ca) (1)
- 1.5 D ✓ to pump blood (1)
- [5]**

QUESTION 2: MATCH THE WORDS

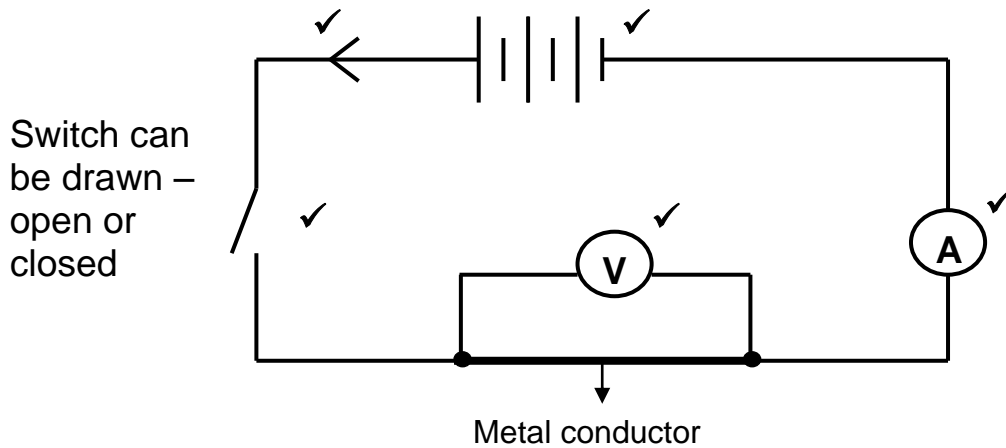
- 2.1 I antibiotics ✓ (1)
- 2.2 G excretion ✓ (1)
- 2.3 A corrosion ✓ (1)
- 2.4 B indicator ✓ (1)
- 2.5 C volcano ✓ (1)
- (5 x 1) **[5]**

QUESTION 3: FILL IN THE MISSING WORDS

- 3.1 body ✓ (1)
- 3.2 lungs ✓ (1)
- 3.3 right ✓ (1)
- 3.4 oxygen ✓ (1)
- 3.5 left ✓ (1)
- (5 x 1) **[5]**

QUESTION 4: ENERGY AND CHANGE

4.1



4.2 Thickness or diameter of the conductor ✓ (1)

4.3 If the thickness (diameter) of a conductor increases, ✓ then the resistance of the conductor will decrease. ✓

OR

If the thickness of the conductor decreases, ✓ then the resistance of the conductor will increase. ✓ (2)

4.4 $R = \frac{V}{I}$

$$3\ \Omega = \frac{V}{1,5\ \text{A}} \quad \checkmark \checkmark \quad \text{OR} \quad (V = IR, V = 3\ \Omega \times 1,5\ \text{A} \quad \checkmark \checkmark)$$

$$V = 4,5\ \text{V} \quad \checkmark \quad (3)$$

4.5 1,5 coulomb ✓ of charge passes through the conductor or ammeter in 1 second. ✓ (2)

4.6 4.6.1 C2. ✓ An additional conductor, connected in parallel with C will increase the total thickness ✓ and therefore decrease the resistance. (3)

[16]

QUESTION 5: LIFE AND LIVING

- 5.1 Animal cell ✓ (1)
- 5.2
- Part marked 1 – cell membrane ✓
 - Part marked 4 – nucleus ✓
 - Part marked 5 – cytoplasm ✓
- (3)
- 5.3 The part of the cell that is referred as the brain is the nucleus ✓ because it controls everything that takes place inside the cell. ✓ (2)
- 5.4 Part marked 1 controls the entry and exit of substances into and out of the cell. ✓ (1)
- [7]**

QUESTION 6: LIFE AND LIVING

- 6.1 Tuberculosis is caused by a bacterial infection of the lungs. ✓ (1)
- 6.2 The abbreviation of tuberculosis is TB. ✓ (1)
- 6.3 Tuberculosis is spread by inhaling the bacteria into the lungs when someone who has the disease coughs. ✓✓ (2)
- 6.4
- Chest pains ✓
 - Coughing blood ✓
 - Fever and sweating ✓
 - Lose weight ✓
 - No appetite ✓
- (Any 4 x 1) (4)
- 6.5 Keep body healthy, ✓ /do exercise, ✓/ eat healthy✓/ and have well ventilated rooms. ✓ (Any 2 x 1) (2)
- [10]**

QUESTION 7: LIFE AND LIVING

- 7.1 220 active smokers die of heart diseases ✓ (1)
- 7.2 active smokers ✓ (1)
- 7.3 Non-smoker ✓ because many people died of smoking related diseases. ✓ (2)
- [4]**

QUESTION 8: MATTER AND MATERIALS

- 8.1 $\text{CH}_4 \checkmark + \text{O}_2 \checkmark \rightarrow \text{CO}_2 \checkmark + \text{H}_2\text{O} \checkmark$ (4)
- 8.2 $\text{H}_2 \checkmark + \text{O}_2 \checkmark \rightarrow \text{H}_2\text{O} \checkmark$ (3)
- [7]**

QUESTION 9: MATTER AND MATERIALS

- 9.1 Hydrochloric acid has a pH value of 1. ✓ (1)
- 9.2 Taking bicarbonate of soda helps to relieve indigestion because it neutralises excess acid in the stomach. ✓✓ (2)
- 9.3 The gas that is released is carbon dioxide. ✓ (1)
- 9.4 When carbon dioxide is bubbled through clear lime water, the lime water turns clear lime water milky cloudy. ✓✓ (2)
- 9.5 Sodium bicarbonate + hydrochloric acid ✓ → Sodium chloride + Water + Carbon dioxide ✓ (2)
- 9.6 $\text{NaHCO}_3 \checkmark + \text{HCl} \checkmark \rightarrow \text{NaCl} \checkmark + \text{H}_2\text{O} \checkmark + \text{CO}_2 \checkmark \checkmark$ (6)
- [14]**

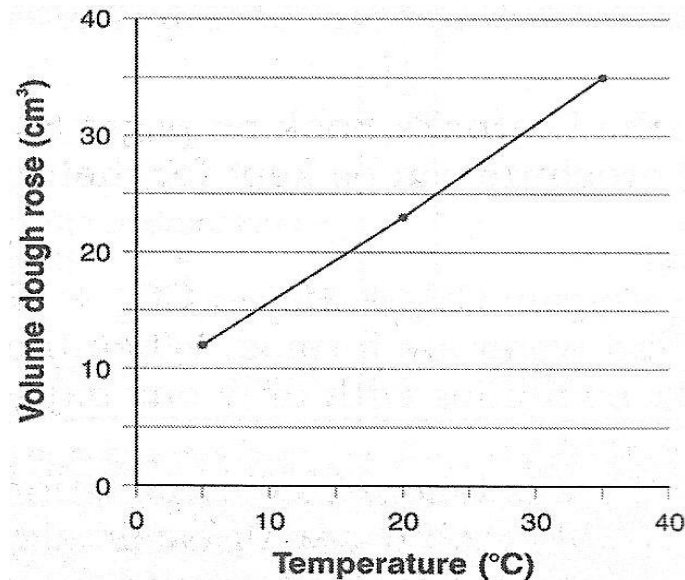
QUESTION 10: MATTER AND MATERIALS

- 10.1 The exposed iron reacted with oxygen and water in the air. ✓✓ Oxidation started and the outer layer of iron reacted producing iron oxide which is called rust. ✓ (3)
- 10.2 Shanti's father would have to remove the rusted area or remove the rust. ✓ Then the area would have to be coated with paint. ✓ (2)
- [5]**

QUESTION 11: MATTER AND MATERIALS

- 11.1 What is the effect of temperature ✓ on carbon dioxide production? ✓ (2)
- 11.2 The time the dough was left to rise, ✓/ the ingredients, ✓/ the amount of each ingredient the amount and type of yeast, ✓/ the temperature of the ingredients at the start. ✓ (Any 2 x1) (2)
- 11.3 The test was fair ✓ because all other variables were kept the same. ✓✓ (3)

11.4



Marking codes:

Labels: drawing of X-axis and Y-axis using a proper scale. (√√)

X-axis √ Temperature and Y-axis √ Volume of dough.

Plotting the points correctly and for joining the lines (√)

Heading (√)

(6)
[13]

QUESTION 12: ENERGY AND CHANGE

12.1 Sulphur dioxide, √ chloride, √ fluoride √ (Any 3) (3)

12.2 **Lava** is the molten hot rock that reaches the surface of the earth from volcanic eruptions. √ Destroy vegetation, cause health problems and contamination of water. √ (3)

12.3 **Acid rain** is formed when sulphur dioxide and nitrogen oxide are in the atmosphere. √ These two oxides react with rain droplets to form sulphuric acid and nitric acid. √ Destroys crops, √ vegetation and wild animals. √ (3)
[9]

TOTAL: 100